

## Narrow operating space in laparoscopic procedures?

T'LIFT<sup>®</sup>: the exclusive  
"Space Opener Solution"

**GYNE:** uterus, ovary suspension

**BARIATRIC:** intestinal tract retraction

**VISCERAL:** mesh positioning

**URO:** bladder suspension

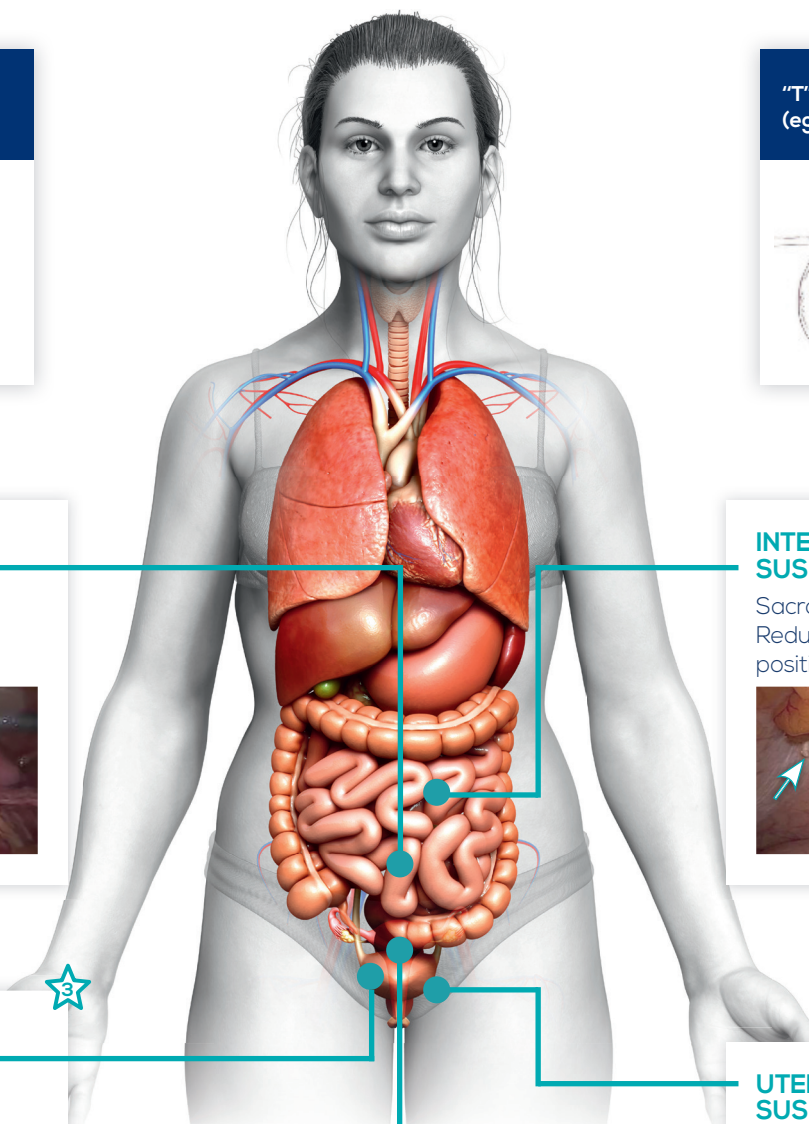
**ALL FIELDS:** peritoneum suspension

# T'LIFT®: The minimally invasive approach in laparoscopic space opening

Device allowing the operating space opening through organs suspension, facilitating so the access and the visibility for the surgeon.

- Avoid the use of an additional trocar or grasping forceps.
- Adapted to conventional or robotic surgeries.

## INDICATIONS



**"Hook" type retraction (eg: peritoneum)**

Thin arm upward

J Shape

**"T" type retraction (eg: ovary)**

T Shape

**PERITONEUM SUSPENSION**

Transperitoneal para-aortic lymphadenectomy

Cranial vision

**INTESTINAL TRACTS SUSPENSION**

Sacrocolpopexy  
Reducing TRENDELENBURG position

**OVARY SUSPENSION**

Deep endometriosis

**BLADDER SUSPENSION**

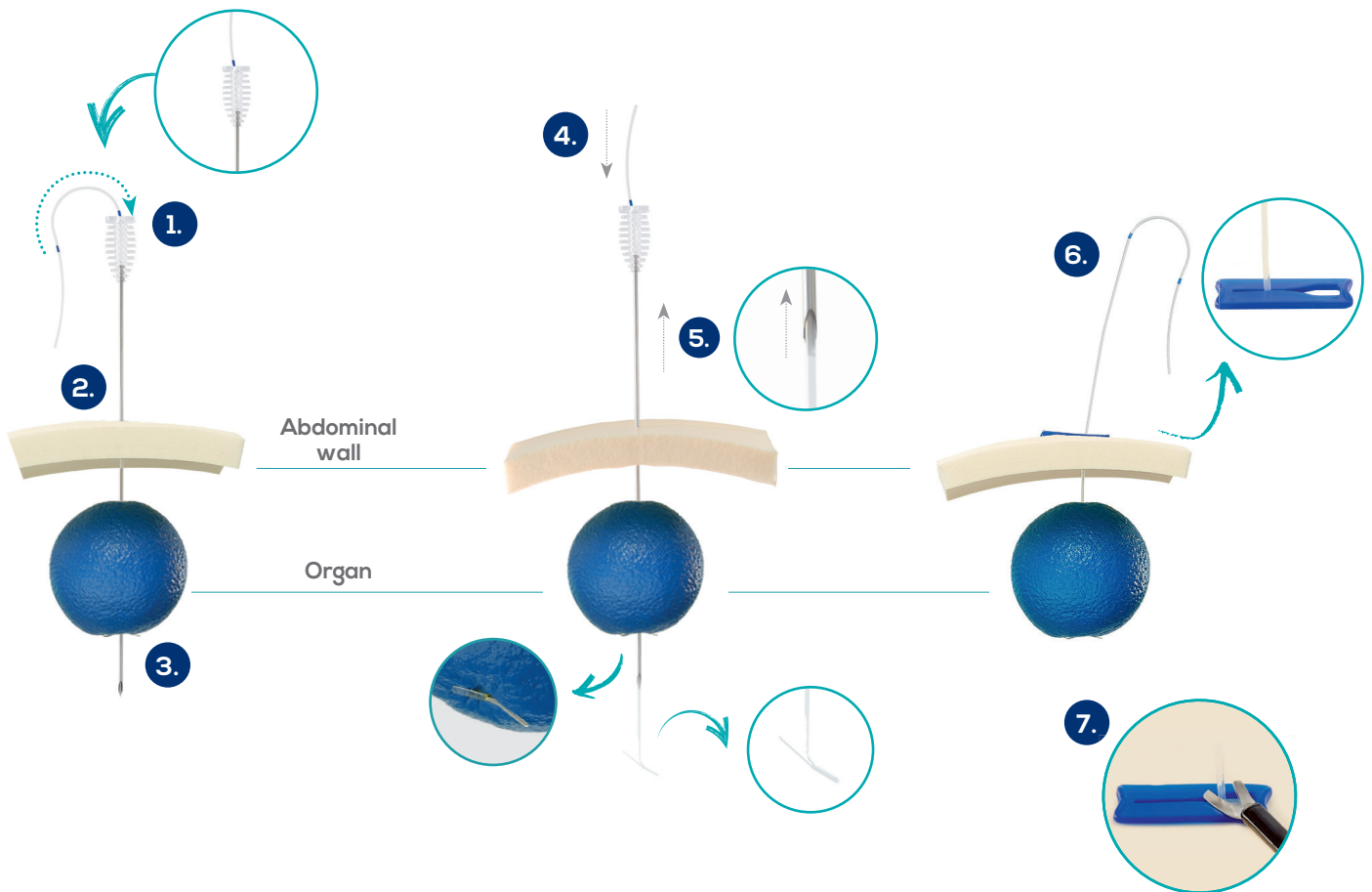
Radical hysterectomy

Bladder serosa

**UTERUS SUSPENSION**

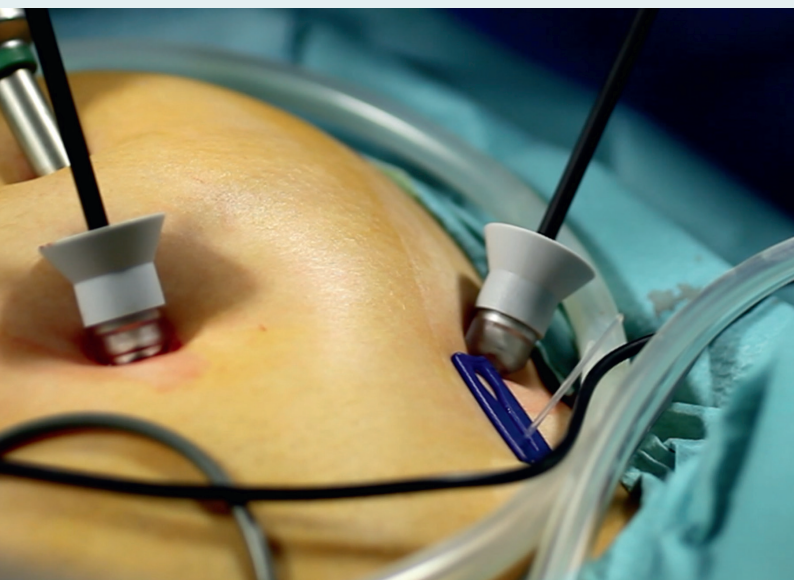
Deep endometriosis  
Sacrocolpopexy

## INSTALLATION STEPS



- 1. Loading the T'LIFT®** thicker arm inside the applicator till the 1<sup>st</sup> blue mark.
- 2. Perforation** of the abdominal wall.
- 3. Thorough perforation of the organ** to be suspended.
- 4. Push T'LIFT®** inside the applicator till the 2<sup>nd</sup> blue mark. T'LIFT® deployment in its distal part.

- 5. Extraction** of the applicator and suspension height adjustment.
- 6. T'LIFT® locking.**
- 7. At the end of the procedure,** cut the T'LIFT® at the level of the abdominal wall and extract it through a trocar.



To see the installation steps, scan :



## T'LIFT® CONTENT

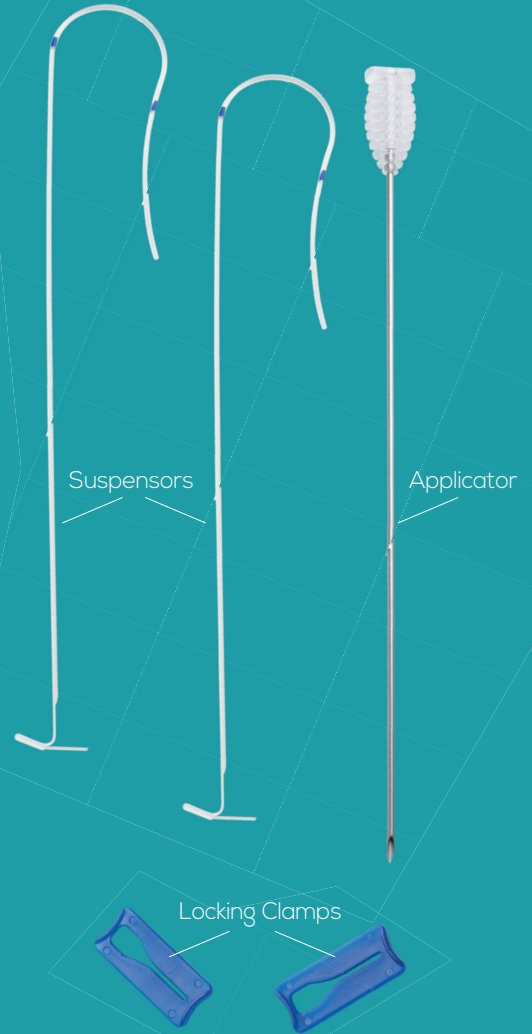
Code	Description	Qty/box
<b>AW16280</b>	2 T'LIFT® retractors, 1 stainless steel applicator, 2 locking clamps	25



T'LIFT® has been invented, developed and manufactured in France since 2011 and, since then, sold in many countries worldwide.




Static suspension capacity claimed at 0,8kg  
- Tensile strength validated by systematic control for each manufacturing batch.



T'LIFT® is a class IIa Medical Device.

Indications: The T'Lift®, medical device for single use, is designed to remove or suspend tissues and organs (e.g. sigmoid colon, peritoneum, ovary, uterus, gall bladder). The T'LIFT® is used for laparoscopic visceral, digestive and gynecological surgery. The T'LIFT® may only be used by a surgeon qualified in the surgical techniques and procedures involving the use of T'LIFT®. It is intended for use in an adult population.

Carefully read the Instructions for Use of medical device before use.  0459

### Peters Surgical Headquarters & French Affiliate

Immeuble AURELIUM  
1 cours de l'Île Seguin  
92100 Boulogne-Billancourt - France  
+33 1 48 10 62 62  
peters-surgical.com  
peters-surgical.fr

### Peters Surgical Polska

01-756 Warszawa,  
ul. Przasnyska 6B, Poland  
+48 22 462 42 52

### Peters Surgical India Pvt.ltd.

Emaar Digital Greens, Unit No. 508-511 5th Floor,  
Tower-A, Sector-61  
Golf Course Extension Road Balarampur Naya,  
Gurgaon 122102 Haryana India  
+91-11-46564700  
peters-surgical.in

### Peters Surgical Benelux

Beelerstrooss, 2 (entrée B)  
L-9991 - Weiswampach  
Grand Duché du Luxembourg  
+352 26 90 80 13

### Peters Surgical USA - Vitalitec Inc

10 Cordage Park Circle,  
Suite 100 Plymouth,  
MA 02360 USA  
+1 508-747-6033  
peters-surgical.us

### Peters Surgical Germany - Catgut GmbH

Gewerbepark 18  
D-08258 Markneukirchen, Germany  
+49 37422 583-0  
peters-surgical.de

Presentation dedicated to PETERS SURGICAL employees,  
distributors and healthcare professionals

JUNE 2024 - ENLAPA10V00P

